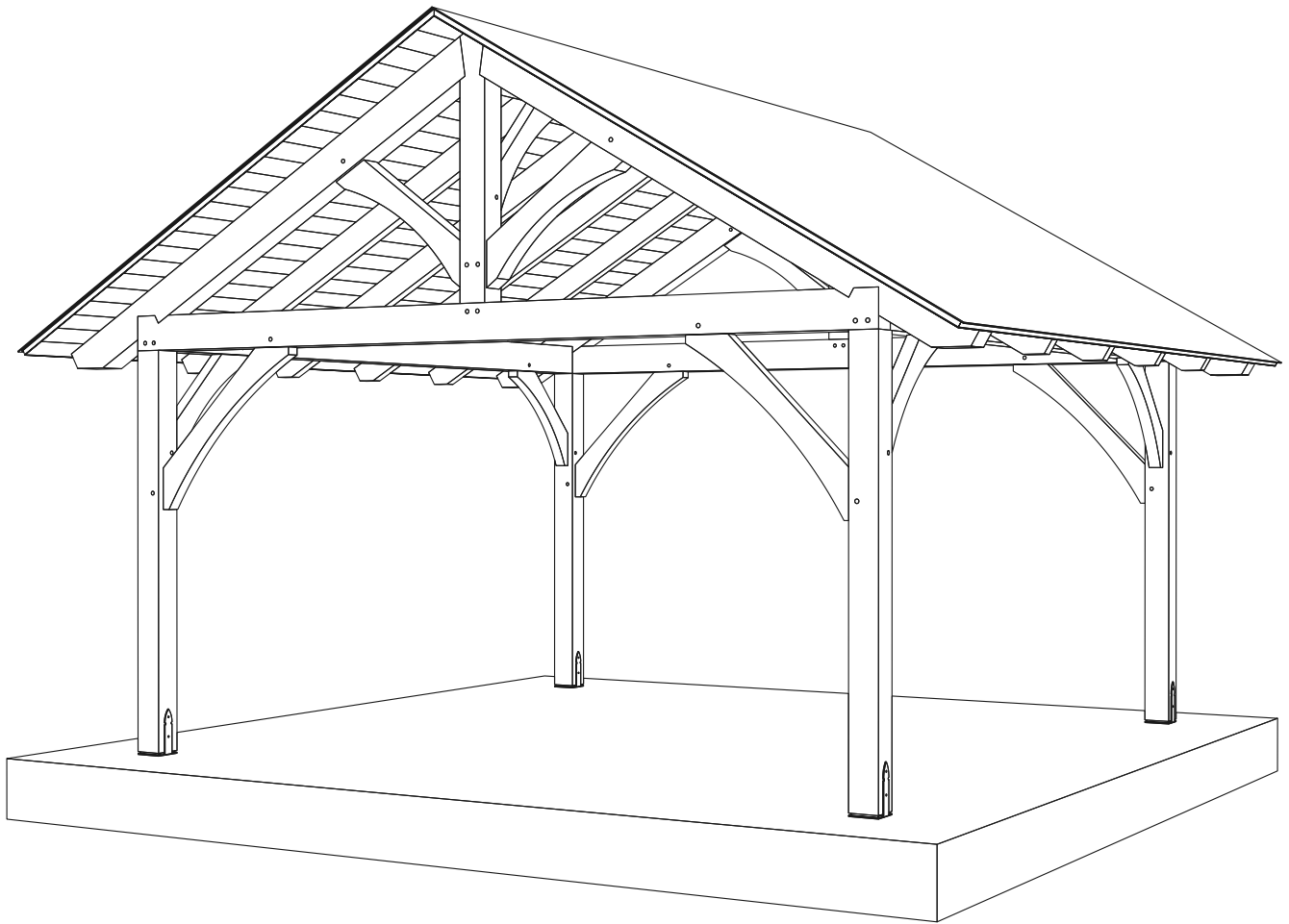


# TIMBER FRAME PAVILION CONSTRUCTION MANUAL



LANCASTER  
COUNTY  
*Backyard*

# REQUIRED TOOLS FOR PAVILION CONSTRUCTION



DRILL



IMPACT DRIVER



CONCRETE DRILL BIT



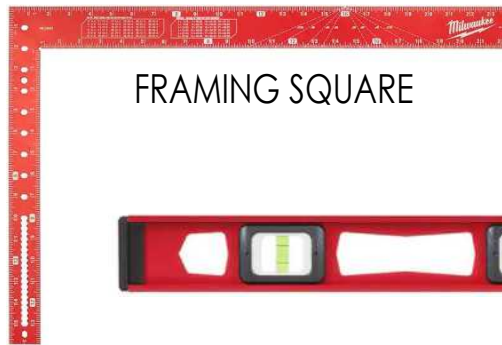
ROTARY HAMMER DRILL



HAMMER



CIRCULAR SAW



FRAMING SQUARE



LEVEL



1/2" ROD TO TEMPORARILY HOLD BRACES DURING INSTALATION



RACHET WITH SOCKET



RECOMMENDED FOR SETTING RAFTERS

PLANK

RECOMMENDED FOR SETTING POSTS



LASER LEVEL

RECOMMENDED TOOLS FOR ROOF DECKING AND SHINGLES

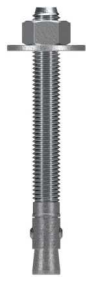


ROOFING NAILER AND NAILS

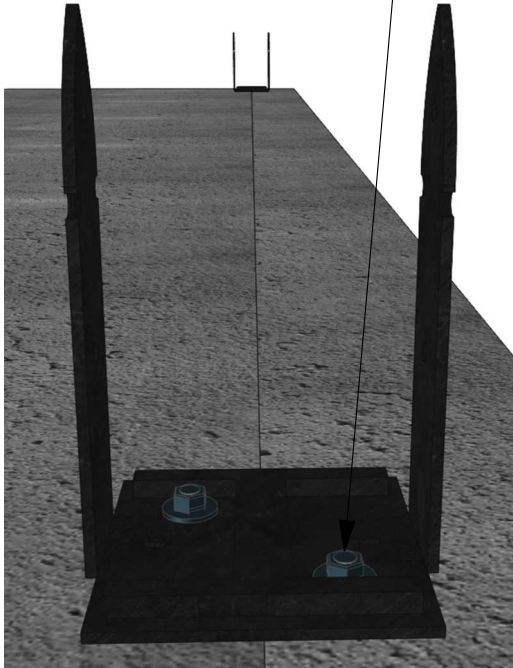


FRAMING NAILER AND FRAMING NAILS

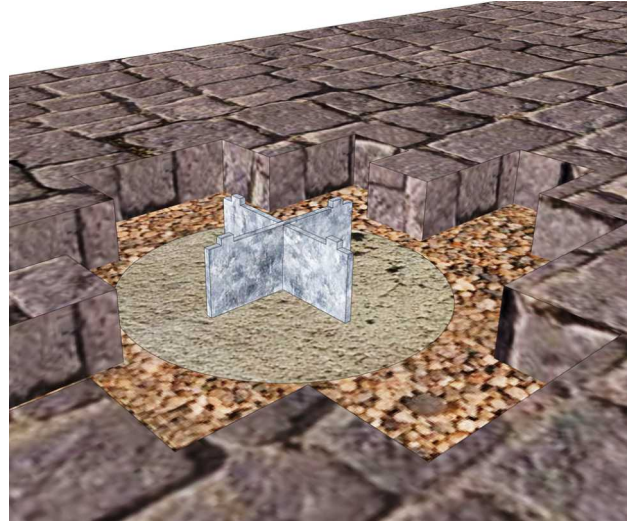
1 SECURE POST ANCHOR BRACKET TO CONCRETE WITH WEDGE ANCHORS



BRACKET MUST BE LEVEL!



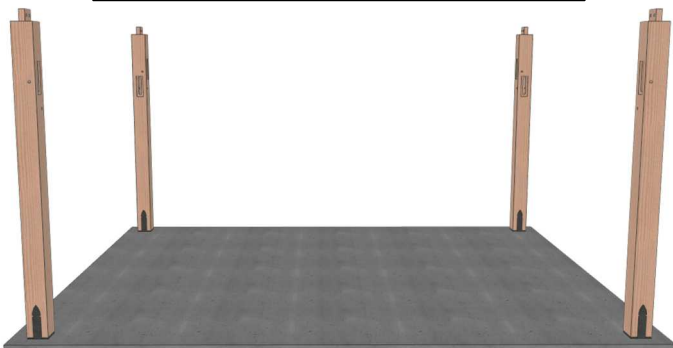
OPTIONAL 2 1/2" STANDOFF FOR BRICK PAVERS



2 ATTACH POST TO POST ANCHOR BRACKET WITH STRUCTURAL SCREWS

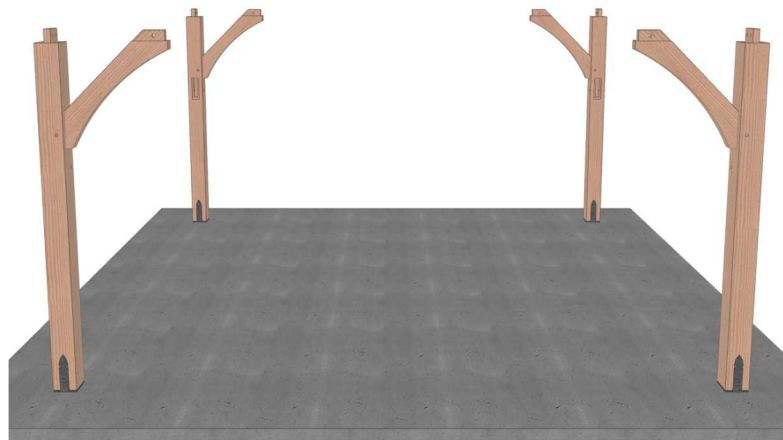


DO NOT CUT THE TOP OF POSTS!

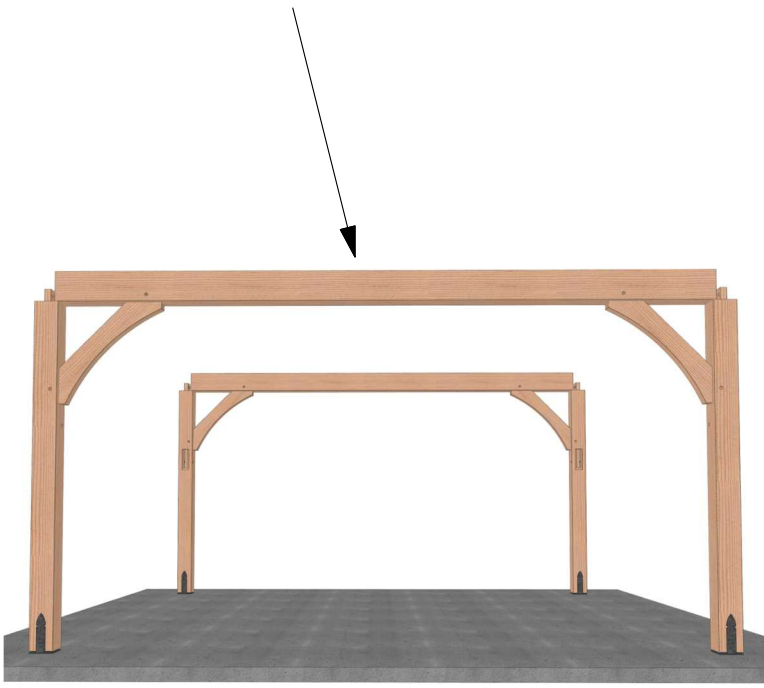


TOP OF ALL POSTS NEED TO BE THE SAME LEVEL!

3 TEMPORARLY SET BRACES WITH 1/2" ROD BEFORE SETTING RAFTER PLATES



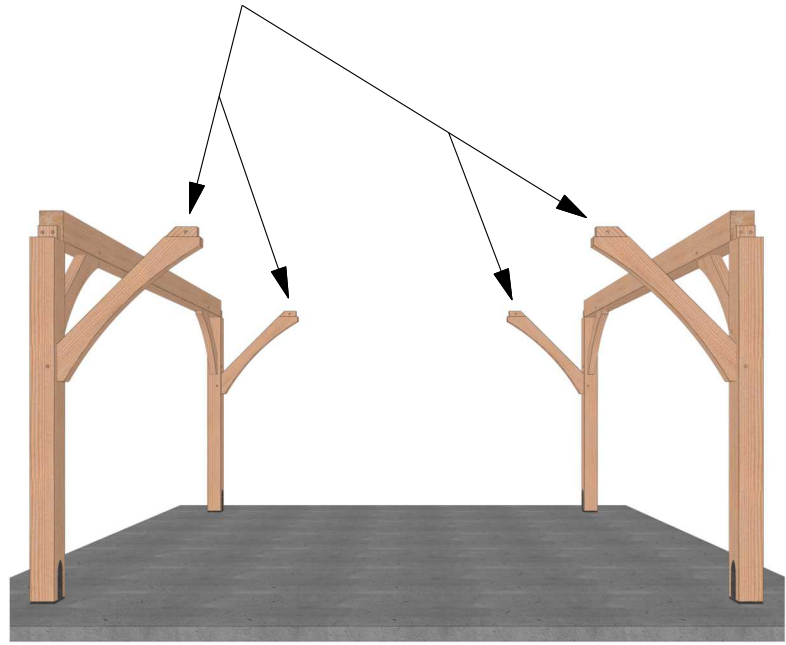
4 SET RAFTER PLATES



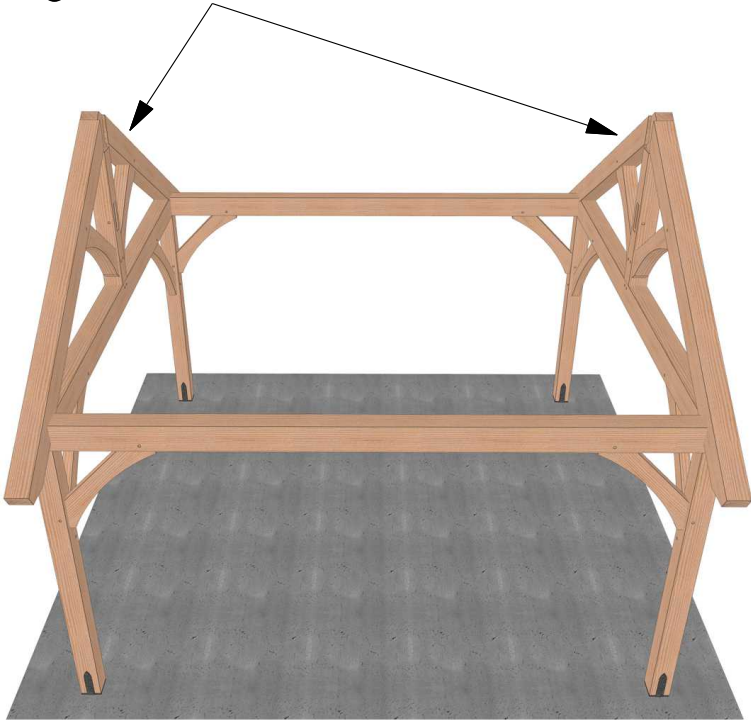
INSERT WOOD PEGS



5 TEMPORARILY SET BRACES WITH 1/2" ROD BEFORE SETTING TRUSSES



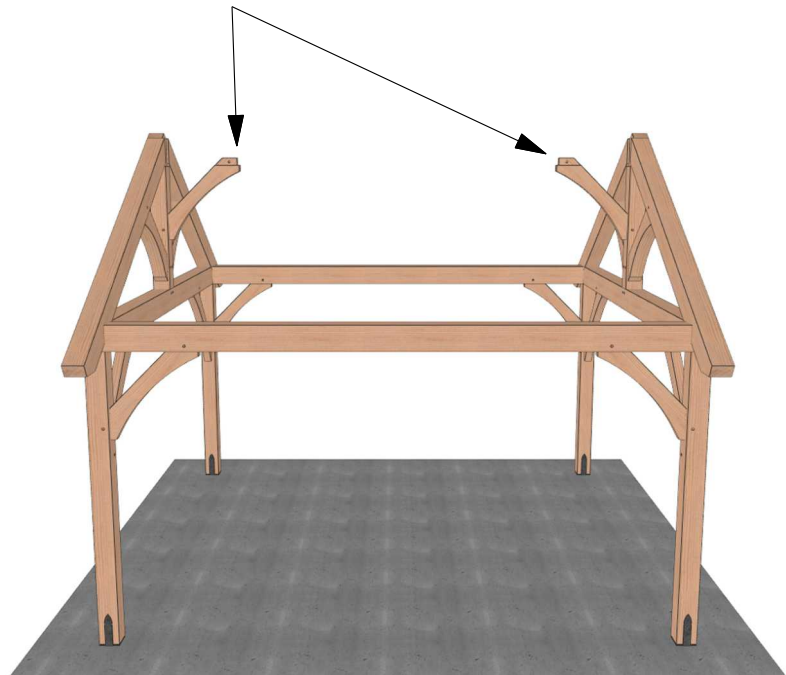
6 SET TRUSSES



INSERT WOOD PEGS

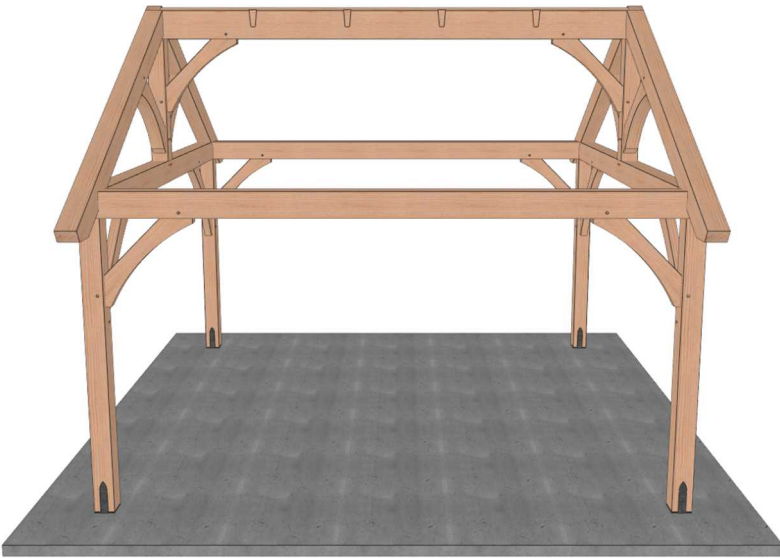


7 TEMPORARILY SET BRACES WITH 1/2" ROD BEFORE SETTING RIDGE



# 8 SET RIDGE

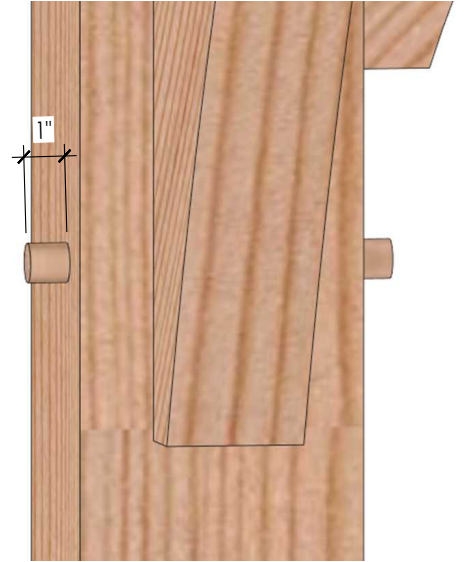
ATTACH RIDGE TO KING POST WITH TIMBER SCREW



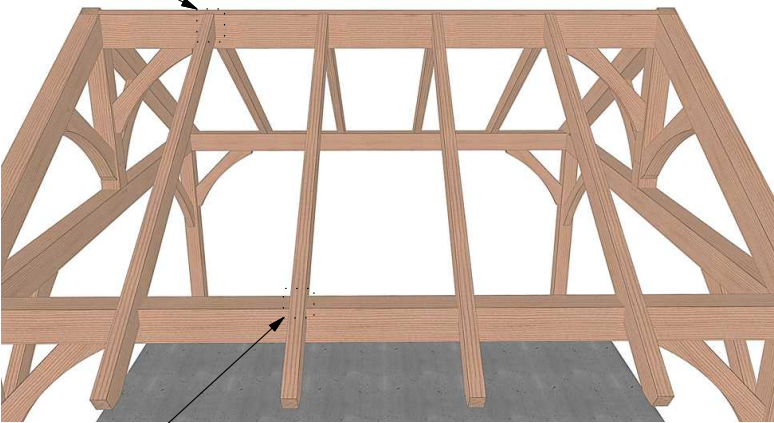
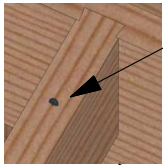
INSERT WOOD PEGS



# 9 CUT PEGS AT 1"



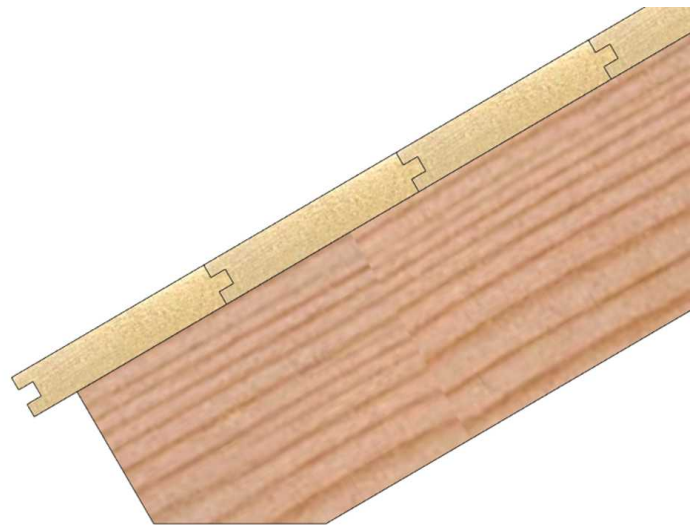
# 10 ATTACH RAFTER TO RIDGE WITH TIMBER SCREW



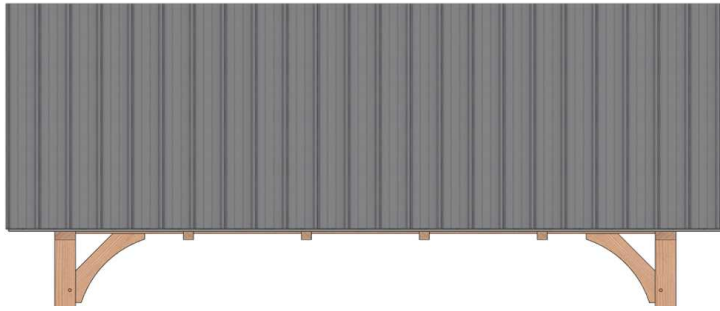
ATTACH RAFTER TO RAFTER PLATE WITH TIMBER SCREW



# 11 ATTACH TONGUE AND GROOVE ROOF DECKING



# 12 INSTALL ROOF MATERIAL OF YOUR CHOICE



INVITE SOME FRIENDS OVER AND ENJOY!



THANK YOU FOR CHOOSING  
LANCASTER COUNTY BACKYARD  
IF YOU HAVE ANY QUESTIONS  
FEEL FREE TO CALL 267-638-6983